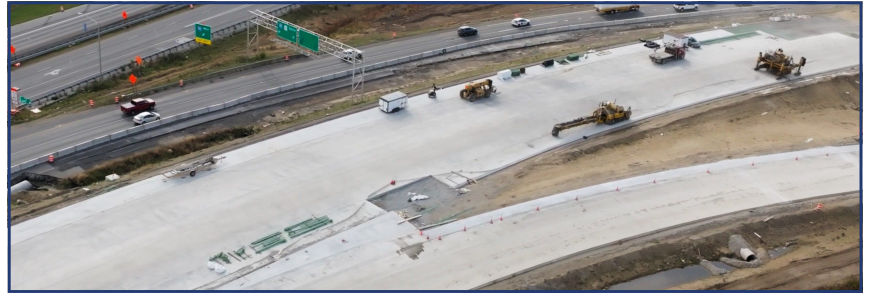


Clear Path 465 is marking a big milestone with its first new system ramp opening to traffic. The ramp from I-69 South to I-465 West is expected to open to traffic on or around Thursday, Dec. 14. An accompanying traffic shift is expected to be complete by Friday, Dec. 15. Drivers will shift to new pavement on I-465 west near Allisonville Road. This is the first of 14 new bridges being built as part of the Clear Path project.



Clear Path crews will have to make several preparations to open the new ramp to traffic.

Lane Closures and Restrictions

MONDAY, DEC. 11 - TUESDAY, DEC. 12 (9 P.M. TO 9 P.M.)

- Ramp from Allisonville Road to I-465 West closed

TUESDAY, DEC. 12 - FRIDAY, DEC. 15 (CLOSING 9 P.M. TUESDAY)

- Ramp from I-465 NB/WB to Allisonville Road closed
- Ramp from I-69 SB/I-465 WB to Allisonville Road closed (Reopens Thursday, Dec. 14, 6 a.m.)

WEDNESDAY, DEC. 13 (9 P.M. TO 6 A.M.)

- Ramp from 96th Street to I-69 South closed
- Ramp from 82nd Street to I-69 South closed
- Three lanes closed on I-69 South from 96th Street to I-465

WEDNESDAY, DEC. 13 - FRIDAY, DEC. 15 (CLOSING 9 P.M. WEDNESDAY)

- No access to Binford Boulevard or I-465 West from 82nd Street to I-69 South

AFTER THE NEW RAMP OPENS (ANTICIPATED FRIDAY, DEC. 15):

- There will be no access to Binford Boulevard or I-465 West when traveling from 82nd Street to I-69 South.
- This configuration will remain the same until the 82nd Street ramps to I-69 South close to traffic in mid-January. They should reopen in late 2024.

Dates and durations may be adjusted if inclement weather or other unforeseen activities occur.

